

GP-2000K-1/GP-2000K-3/GP-2000K-6



Air Loaded Valves for Steam

A high performance externally air piloted pressure reducing valve, the GP-2000K-1/GP-2000K-3/GP-2000K-6 is an ideal choice when set point changes are frequent and access to the PRV is difficult. The valve comes totally assembled and requires no field installation except downstream sensing line and air line connection. High Cv, 20:1 turndown ratio and accurate control $\pm 1\%$ of pressure set point from 5% to 100% of flow. A rugged ductile iron body, hardened stainless steel working parts, double stainless steel diaphragms and in-line repairability add up to reliability on the job. Single seated for dead-end service.

For a fully detailed certified drawing, refer to:

GP-2000K CDY #1014

GP-2000K Flanged CDY #1015

GP-2000K-1, GP-2000K-3, GP-2000K-6 Weights

Size	Weight, lb (kg) [†]						Cv	
	NPT		150#		300#			
in	mm	lb	kg	lb	kg	lb	kg	
1/2	15	34	16	36	15	42	19	5.0
3/4	20	34	16	36	15	42	19	7.2
1	25	44	20	48	20	54	23	10.9
1-1/4	32	51	23	53	22	59	25	14.3
1-1/2	40	51	23	55	23	61	26	18.8
2	50	75	34	81	36	84	36	32
2-1/2	65	—	—	142	65	150	65	60
3	80	—	—	155	69	166	72	78
4	100	—	—	247	112	264	119	120
6	150	—	—	507	230	553	252	250

[†]50% reduced port available for sizes 1/2" - 4". The CV value should be divided by 2 to get reduced port CV.

[†] For GP-2000K-3 and GP-2000K-6 weights, add 7-1/4 lb. (3.3 kg).

GP-2000K-1, GP-2000K-3, GP-2000K-6 Specifications

Application	Inlet Pressure psig (barg)	Reduced Pressure psig (barg)	Max. Temp. °F (°C)	Minimum Differential psig (barg)	Materials				
					Body	Main Valve/ Seat	Pilot Valve/ Seat	Diaphragm	Color
Steam	NPT 15 - 300 (1 - 20)	K-1 7 - 125 (.48 - 8.6) K-3 30 - 200 (2 - 13.8) K-6 45 - 200 (3.1 - 13.8)	450 (232)	7 (.48)	Ductile Iron ASTM A536	Stainless Steel AISI 420	Stainless Steel AISI 301	Dark Gray	
	150 lb Flanged 15 - 185 (1 - 13)								
	300 lb Flanged 15 - 300 (1 - 20)								

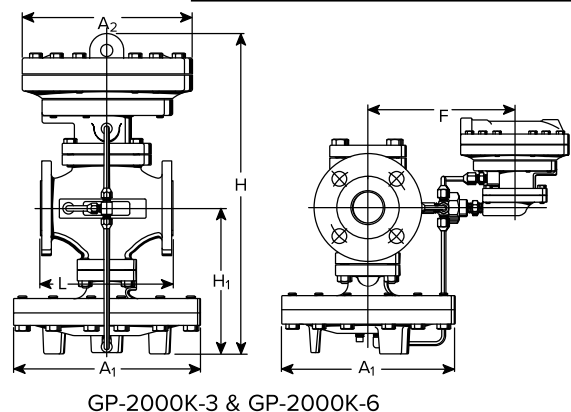
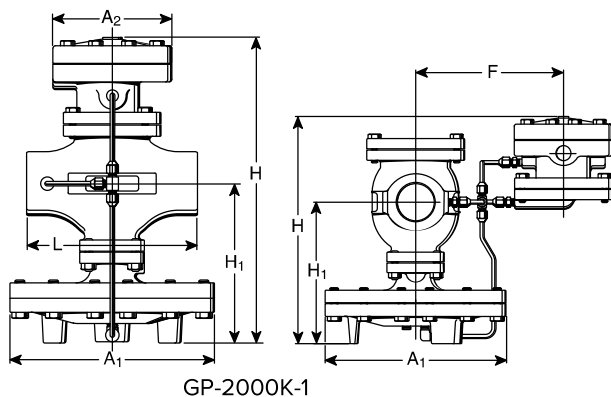
GP-2000K-1, GP-2000K-3, GP-2000K-6 Dimensions

Size	Face-to-Face "L"						A ₁	F	H Integral		H Remote		H ₁		**A ₂				
	NPT		150#		300#				in	mm	in	mm	in	mm	in	mm	in	mm	
1/2	15	5-15/16	150	—	—	—	—	7-15/16	200	6-7/8	175	13-3/16	335	11-13/16	300	6-3/4	170	3-1/4	82
3/4	20	5-15/16	150	—	—	—	—	7-15/16	200	6-7/8	175	13-3/16	335	11-13/16	300	6-3/4	170	3-1/4	82
1	25	6-5/16	160	5-3/4	147	—	—	8-15/16	226	7-1/16	179	13-7/16	341	12	305	6-15/16	175	3-1/4	82
1-1/4	32	7-1/8	180	6-1/2	166	—	—	8-15/16	226	7-7/16	188	14-5/8	371	12-11/16	322	7-5/8	192	3-1/4	82
1-1/2	40	7-1/8	180	7-7/16	189	—	—	8-15/16	226	7-7/16	188	14-5/8	371	12-11/16	322	7-5/8	192	3-1/4	82
2	50	9-1/8	230	8-9/16	217	9-1/8	232	10-15/16	276	7-11/16	195	17-1/8	435	13-1/4	337	8-1/2	216	3-1/4	82
2-1/2	65	—	—	10-15/16	278	11-1/2	292	13-13/16	352	8-5/16	211	19-1/4	489	15-3/8	391	9-13/16	251	3-1/4	82
3	80	—	—	11-3/4	298	12-7/16	316	13-13/16	352	8-3/4	222	20-1/8	512	16-3/8	416	10-7/16	264	3-1/4	82
4	100	—	—	13-1/2	343	14-1/8	359	15-13/16	401	9-7/16	239	23-7/16	595	19-7/8	505	12-5/8	321	3-1/4	82
6	150	—	—	18-1/8	460	19	483	19-3/4	502	—	—	29-3/8	746	—	—	27-1/4	692	3-1/4	82

*For GP-2000K-3 and GP-2000K-6 add 1-1/4" (18 mm) to "H" dimension.

**For GP-2000K-3 and GP-2000K-6, A₂ dimension = 6-13/16" (172 mm).

For capacities see page 305.
For air loading chart see page 301.



Designs, materials, weights and performance ratings are approximate and subject to change without notice. Visit armstronginternational.com for up-to-date information.